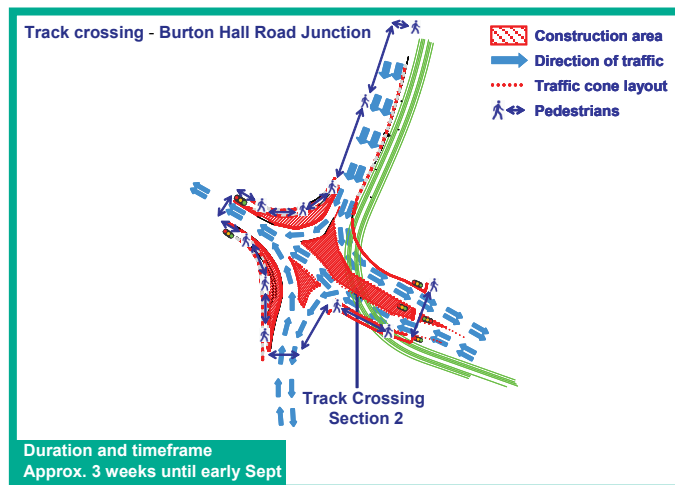
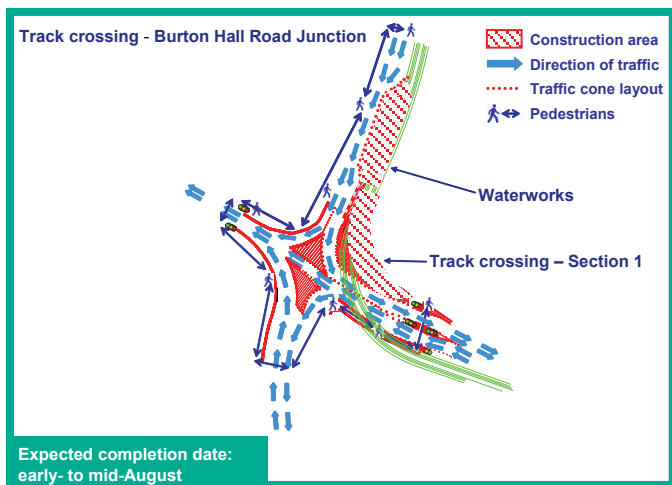


Sandyford to Cherrywood (Line B1)



TRACK AND CIVIL WORKS

Sandyford Stop

Upgrading of Sandyford Stop has commenced. Works on the outbound platform began in late July and are expected to continue until mid-August. During this period, the entire outbound platform will be closed off, and passengers will alight and disembark at the inbound platform. From approximately mid-August, the outbound platform will re-open and passengers will once again disembark at this platform. At the same time, the western half of the inbound platform will be closed off for upgrading works, which are expected to last until mid-September; passengers will alight on the eastern half of the inbound platform during this period.

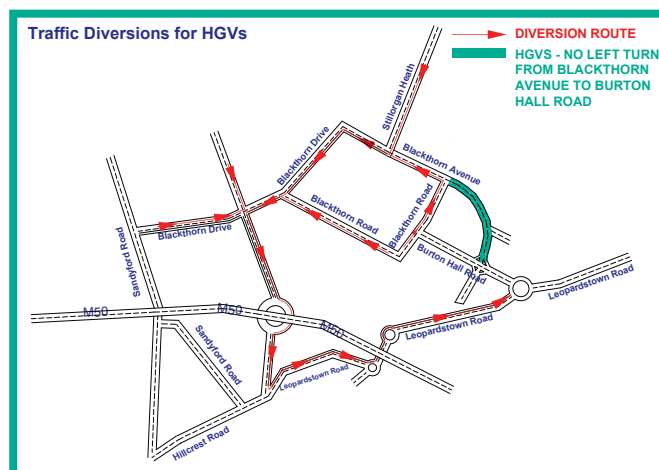
A temporary ticketing area has been constructed at the front of the inbound platform. All ticket machines and the smart card validators are located at this ticketing area for the duration of the upgrading works at Sandyford Stop. Pedestrians and passengers are requested to follow all diversion signs placed at and around the Sandyford Stop during this period.

Sandyford Depot

Track-laying work continued in July in the Sandyford Depot. During August, earthworks will continue in the depot to prepare for the installation of new tracks for the expanded Green Line fleet.

Burton Hall Road Junction

Work will continue during August on the track installation across the Burton Hall Road Junction, and is expected to continue until early September. Excavations are underway to facilitate the new track and associated infrastructure across Burton Hall Road. This work is expected to continue until mid-August. During this period, traffic flow is reduced to a single lane when turning left from Blackthorn Avenue to Burton Hall Road (see map). There are also restrictions for HGVs at the junction during this phase of works. Pedestrian movement is also changed at the Burton Hall Road junction during this phase. For your own safety, please follow all diversions to temporary crossing points. Laying of the remaining section of track is expected to begin in mid August and will take approximately three weeks to complete (see map). Normal traffic flow will resume for cars and light goods vehicles. The same restrictions will apply for HGVs, and pedestrian movements during this period.



Brennanstown

Work will shortly be commencing on the old Harcourt Line railway cutting between Carrickmines and Brennanstown. Works will initially involve ground clearance. It should be noted that the old right of way from Brennanstown Vale across the railway was extinguished in 2006 under the Line B1 Railway Order and this area is now a construction site. For your own safety, please do not attempt to enter this area.

Sandyford to Cherrywood (Line B1)

LUAS SERVICES - LATE STARTS AT SANDYFORD STILLORGAN AND KILMACUD LUAS STOPS

To facilitate the ongoing construction of the Luas Green Line extension, Sandyford, Stillorgan and Kilmacud Stops will be closed until 9.15am on some Saturdays and Sundays during August. As dates become confirmed, information will be made available on www.luas.ie. Alternative bus transport from the closed stop to, and from, Balally will be provided for Luas Customers. Intending passengers should check www.luas.ie for further information. Late starts have already been confirmed for : Sat 02nd August Sun 03rd August Mon 04th August (Bank Holiday)

UTILITY DIVERSIONS

Ballyogan Road

On Ballyogan Road, the construction of the new carriageways, cycle-lanes, footpaths and track-bed continues. A speed limit of 30 kph is in place on the temporary surfacing. This speed limit is enforceable by the Gardai and everybody, including pedestrians, are requested to obey the temporary directions signs. Boundary works walls are being built from Glencairn Heath to Leopardstown Valley. These works are due to be complete by early September. Construction of the track-bed will be ongoing in the month of August. Water and drainage works will continue from Leopardstown Valley to Ballyogan Vale.



Ballyogan Road Construction Works

BRIDGES

New Luas Bridge over Brewery Road / Leopardstown Road Roundabout

Installation of the handrails has commenced and is progressing well. Works have also commenced to the road and roundabout alignment under the bridge. These works will be carried out at night time under the same traffic management systems that worked seamlessly for the installation of the structural steel. Works will take place out of business hours on Monday to Fridays and will take approx 3 weeks to complete. The slip lane from Leopardstown Road to Burton Hall Road Junction will be reopened to vehicular traffic at the end of July and it is envisaged that the structure will be substantially complete in late August 2008.

New Luas Bridge over M50 at junction 15 (Carrickmines Bridge)

At Carrickmines Bridge, the main deck works are complete. Works on both of the reinforced earth ramps are progressing well and it is envisaged that the structure will be substantially complete in late August 2008.

New Luas Bridge over M50 at junction 14 (Leopardstown Bridge)

Construction of the Luas Bridge over the M50 at Leopardstown continues to progress well with all concrete works to the deck being complete. Installation of the aluminium handrails is progressing as are works to the reinforced earth ramps. It is also envisaged that this structure will be substantially complete in late August 2008.

Glenamuck Road Upgrade Works

Works are almost complete at Glenamuck Road. However, the remaining activities are requiring localised traffic management so please drive with caution.

SANDYFORD CAR PARK

Please note that pay & display and day rate parking is provided by the local authority in the Sandyford Industrial Estate and Stillorgan Industrial Park.

For more details on the locations and rates check out <http://www.dlrco.ie/roads/payndisplaycharges.pdf>

Please note when you submit your contact details you agree to be added to the RPA Public Consultation Database. To remove your details from the Database simply send us an email to info@rpa.ie. All contact information provided to RPA will be treated a confidential; see www.rpa.ie for details of RPA Privacy Policy.