

6.0 Traffic Management Site Specific Plan Blackthorn Drive (Sequence of Works)

As the map below shows the location of works where the finishing works on Blackthorn Drive are to be completed. During the initial review of the traffic management plan considerations were in place for the live traffic using the roads, pedestrians using the footpaths and local business.



No traffic during this phase of works will be disrupted during the constructions works as the lane that is for opening is already closed. One lane has been in operation for months now and will remain that way until the works are completed.

All traffic management equipment will be positioned in accordance with chapter 8.

As the areas of works already are secured with barriers, extra barriers will be in place along with signage to protect all road users and pedestrians.

Traffic management barriers are to be positioned from the corner of Blackthorn Drive all the way to the set of traffic lights at carmanhall road junction. See traffic management no????

Where cars are parking now will be used for parking for contractors during construction stage.

Local Business EZ Living Furniture viewing windows on the construction side of Blackthorn Drive will remain open but will be protected by barriers.

TRAFFIC & PEDESTRIAN MANAGEMENT

Pedestrian diversions will be in place as shown in the traffic management drawing no.?????

All vehicles using Blackthorn Drive from the Luas station approaching the turn left up Blackthorn Drive will be issued with advance road signage to highlight the construction entrance ahead. Pedestrians walking from the Luas station side of blackthorn avenue will have the following two options:

1. BLACKTHORN DRIVE – CARMANHALL ROAD:

Pedestrians - To access up towards the direction of Carmanhall road, diversion signs will be in place along blackthorn drive to inform the pedestrians of the diversions in place.

All pedestrian signage will be displayed on the footpaths in a safe and secure location. All signage will be made secured. This diversion will be through the apartment complex which all pedestrians seem to use due to the lack of access on the blackthorn drive due to unfinished works. See traffic management plan no ?????

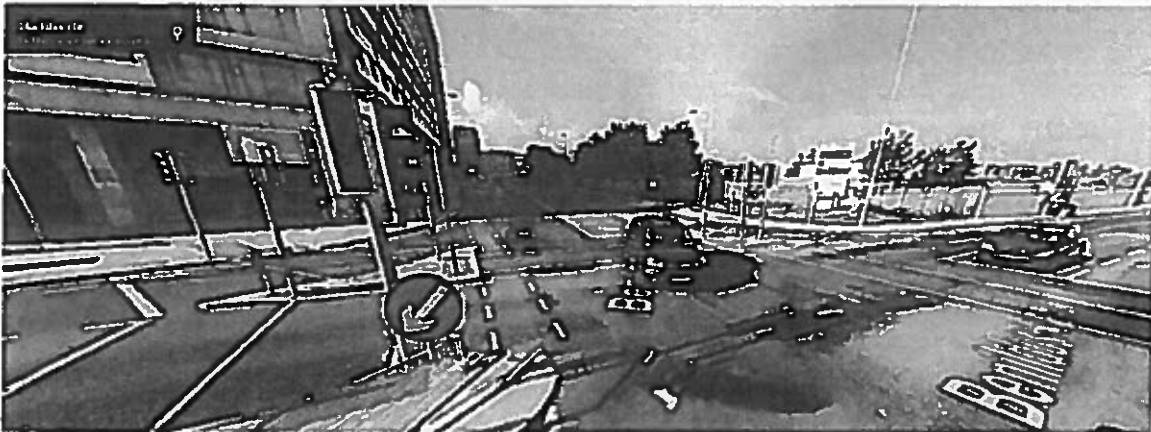
Vehicles – All vehicles using Blackthorn drive to Carmanhall road will be using the same access as usual as no construction works will affect the flow of traffic. All vehicles drivers will be made aware of construction entrance ahead via advance signage displayed on route. See traffic management plan No. BDF-001



2. BLACKTHORN DRIVE – BENILDUS AVENUE:

Pedestrians - Pedestrian's moving towards the direction of Benildus Avenue will continue as normal as no disruption's will be in place. Pedestrian's signs however will be in place to alert pedestrians of this. There safe access is the same as before by accessing the pedestrians crossing that is in place already. See traffic management plan no. No. BDF-001

Vehicles – All vehicles using Blackthorn drive to Benildus Avenue will be using the same access as usual as no construction works will affect the flow of traffic. This route remains the same as before. See traffic management No. BDF-001



3. BENILDUS AVENUE – BLACKTHORN DRIVE:

Pedestrian's moving towards the direction of Benildus Avenue to Blackthorn Drive will continue as normal as no disruption's will be in place. Pedestrian's signs however will be in place to alert pedestrians of this. There safe access is the same as before by accessing the pedestrians crossing that is in place already. See traffic management plan No. BDF-001

Vehicles – All vehicles using Benildus Avenue to Blackthorn Drive will be using the same access as usual as no construction works will affect the flow of traffic. This route remains the same as always. Construction entrance signage will be displayed to give vehicles users advance warnings.

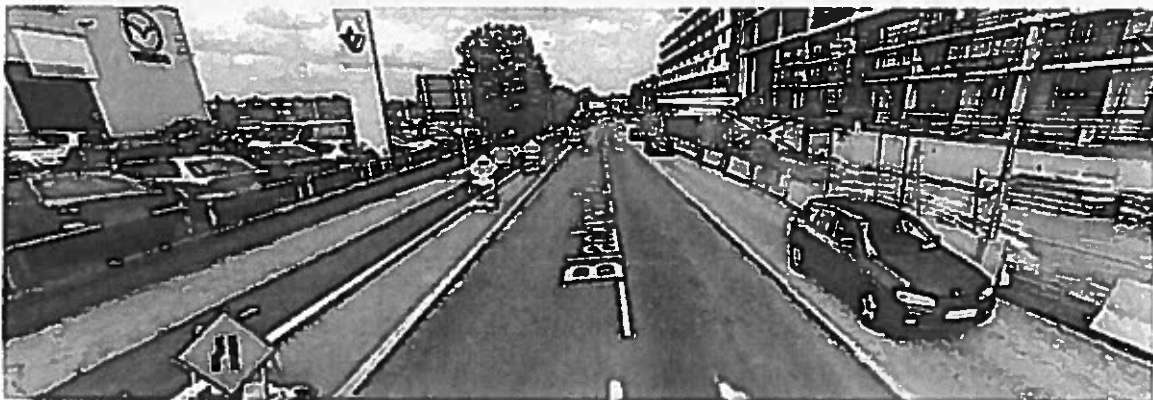


4. BENILDUS AVENUE via BLACKTHORN DRIVE up towards BIRCH AVENUE/CARMANHALL ROAD:

Pedestrians - Pedestrian's moving towards the direction of Birch Avenue & Carmanhall Rd will continue as normal as no disruption's will be in place. The existing footpath that is opposite to the construction zone has open access as normal. See traffic management plan no.???

Vehicles – All vehicles using Benildus Avenue via Blackthorn Drive/Carmanhall will be using the same access as usual as no construction works will affect the flow of traffic. All vehicles drivers will be made aware of construction entrance ahead via advance signage displayed on route. See traffic management plan No. BDF-002

TRAFFIC MANAGEMENT PLAN BLACKTHORN DRIVE



5. CARMANHALL ROAD – BIRCH AVENUE:

Pedestrians - Pedestrian's moving towards the direction of Carmanhall Road to Birch Avenue will continue as normal as no disruption's will be in place. Pedestrian's signs however will be in place to alert pedestrians of this. There safe access is the same as before by accessing the pedestrians crossing that is in place already. See traffic management plan No. BDF-004

TRAFFIC MANAGEMENT PLAN BLACKTHORN DRIVE

Vehicles – All vehicles using Carmanhall road to Birch Avenue will be using the same access as usual as no construction works will affect the flow of traffic. All vehicles drivers will be made aware of construction entrance ahead via advance signage displayed on route. See traffic management plan no ????

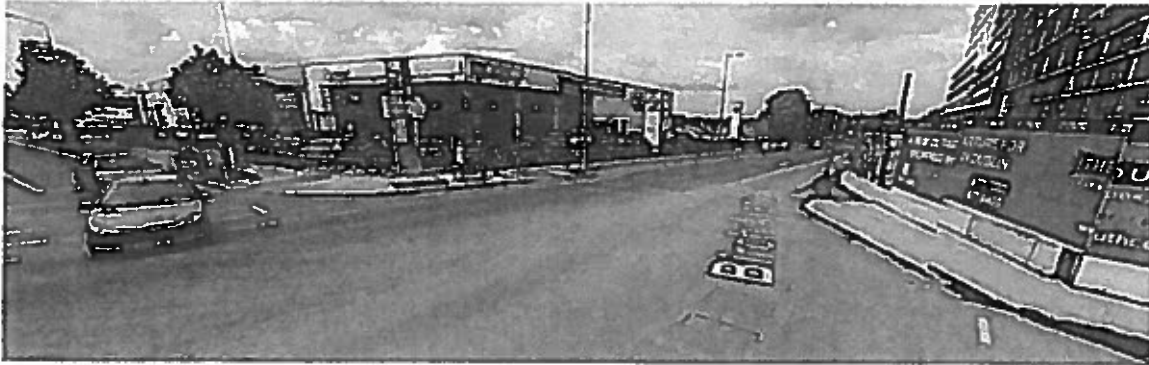
6. CARMANHALL ROAD – BLACKTORN DRIVE:



Pedestrians - Pedestrian's moving towards the direction of Blackthorn Drive from Carmanhall Road will continue as normal as no disruption's will be in place. Pedestrian's signs however will be in place to alert pedestrians of this. There safe access is the same as before by accessing the pedestrians crossing that is in place already. Once across the pedestrian crossing, a diversion sign will be in place to allow pedestrians to follow the footpath outside Sandyford Motor Group all the way to the end of Blackthorn Drive at the opposite side of the construction works. See traffic management No. BDF-005

Vehicles – All vehicles using Carmanhall road to Blackthorn Drive will be using the same access as usual as no construction works will affect the flow of traffic. All vehicles drivers will be made aware of construction entrance ahead via advance signage displayed on route. See traffic management plan No. BDF-001

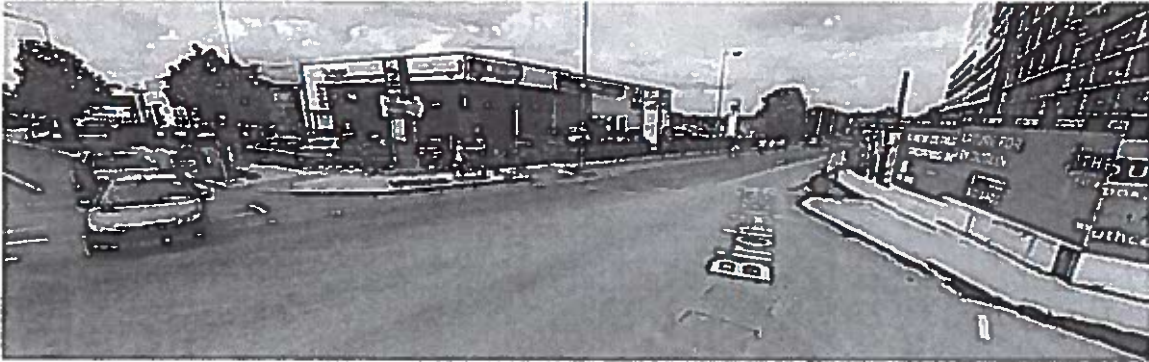
7. CARMANHALL ROAD – BENILDUS AVENUE



Pedestrians - Pedestrian's moving towards the direction of Benildus Avenue from Carmanhall Road will continue as normal as no disruption's will be in place. Pedestrian's signs however will be in place to alert pedestrians of this. There safe access is the same as before by accessing the pedestrians crossing that is in place already. As above, once safely across the pedestrian walkway, pedestrian signage will be in place to divert pedestrians down the footpath opposite the construction zone along by Sandyford motor group. See traffic management plan no.???

Vehicles – All vehicles using Carmanhall road to Benildus Avenue will be using the same access as usual as no construction works will affect the flow of traffic. All vehicles drivers will be made aware of construction entrance ahead via advance signage displayed on route. See traffic management plan No. 8DF-006

8. BIRCH AVENUE – CARMANHALL ROAD



Pedestrians - Pedestrian's moving towards the direction of Birch Avenue to Carmanhall Drive will continue as normal as no disruption's will be in place. Pedestrian's signs however will be in place to alert pedestrians of this. There safe access is the same as before by accessing the pedestrians crossing that is in place already. See traffic management plan no.???

Vehicles – All vehicles using Birch Avenue to Carmanhall road will be using the same access as usual as no construction works will affect the flow of traffic. All vehicles drivers will be made aware of construction entrance ahead via advance signage displayed on route. See traffic management plan No. BDF-003

9. BIRCH AVENUE – BLACKTHORN DRIVE

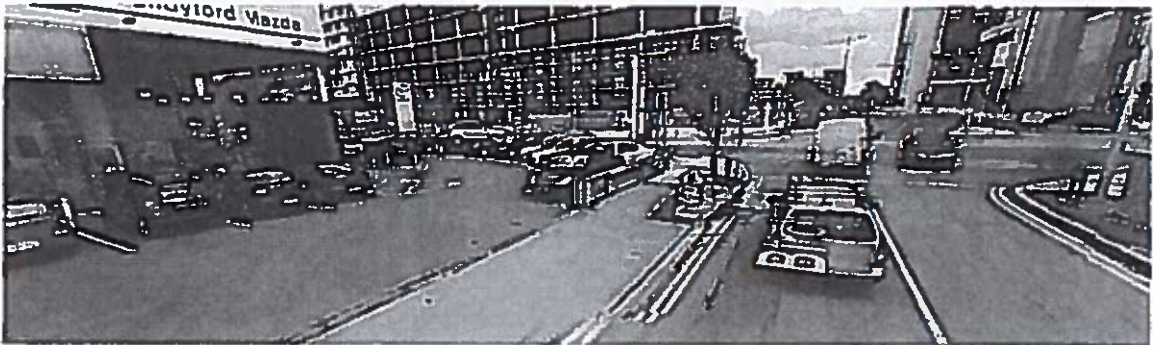
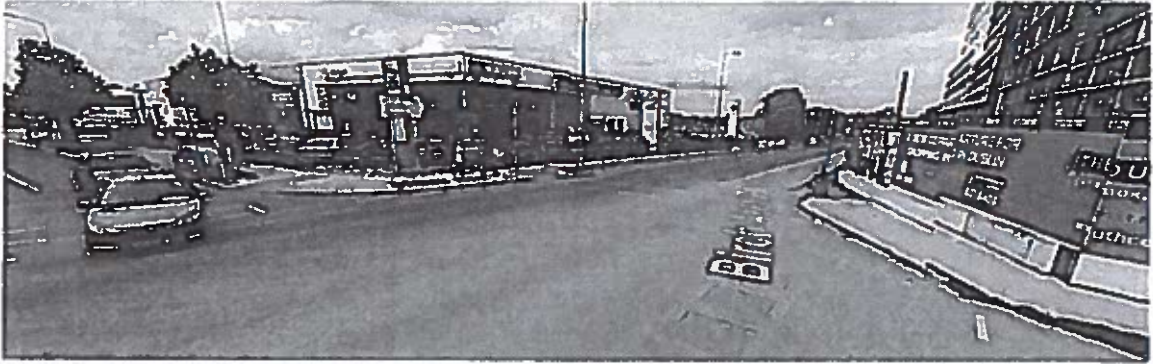


Pedestrians - Pedestrian's moving towards the direction of Blackthorn Drive from Birch Avenue will continue as normal as no disruption's will be in place. Pedestrian's signs however will be in place to alert pedestrians of this. Safe access footpath is already in place opposite the construction zone. See traffic management plan no.???

Vehicles – All vehicles using Birch Avenue to Blackthorn Drive will be using the same access as usual as no construction works will affect the flow of traffic. All vehicles drivers will be made aware of construction entrance ahead via advance signage displayed on route. See traffic management plan No. BDF-003

10. BIRCH AVENUE – BENILDUS AVENUE via BLACKTHORN DRIVE

TRAFFIC MANAGEMENT PLAN BLACKTHORN DRIVE



Pedestrians - Pedestrian's moving towards the direction of Benildus Avenue from Birch Avenue via Blackthorn Drive will continue as normal as no disruption's will be in place. Pedestrian's signs however will be in place to alert pedestrians of this. Safe access footpath is already in place opposite the construction zone. See traffic management plan no.???

Vehicles – All vehicles using Birch Avenue to Benildus Avenue via Blackthorn Drive will be using the same access as usual as no construction works will affect the flow of traffic. All vehicles drivers will be made aware of construction entrance ahead via advance signage displayed on route. See traffic management plan no ????

CONSTRUCTION ENTRANCE

The construction is approx. 100m up Blackthorn Drive on the left hand side. Please see traffic management drawing No. BDF-009

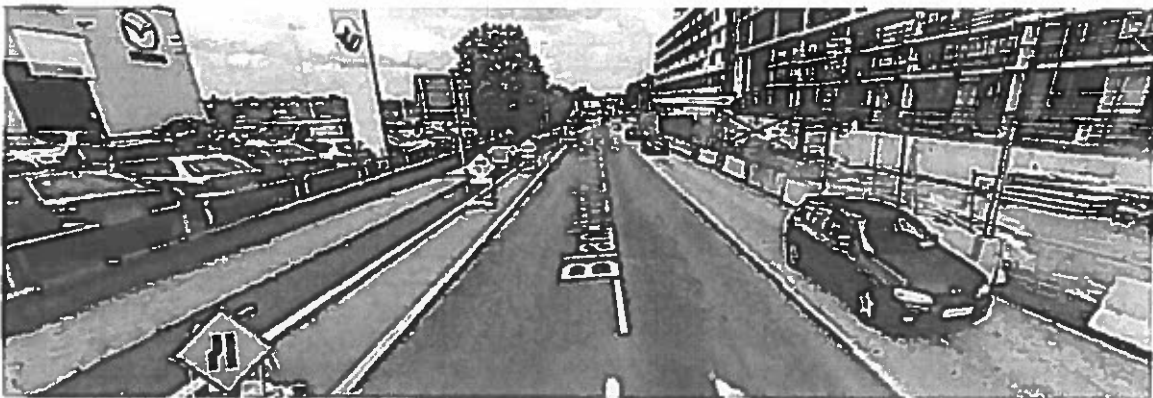
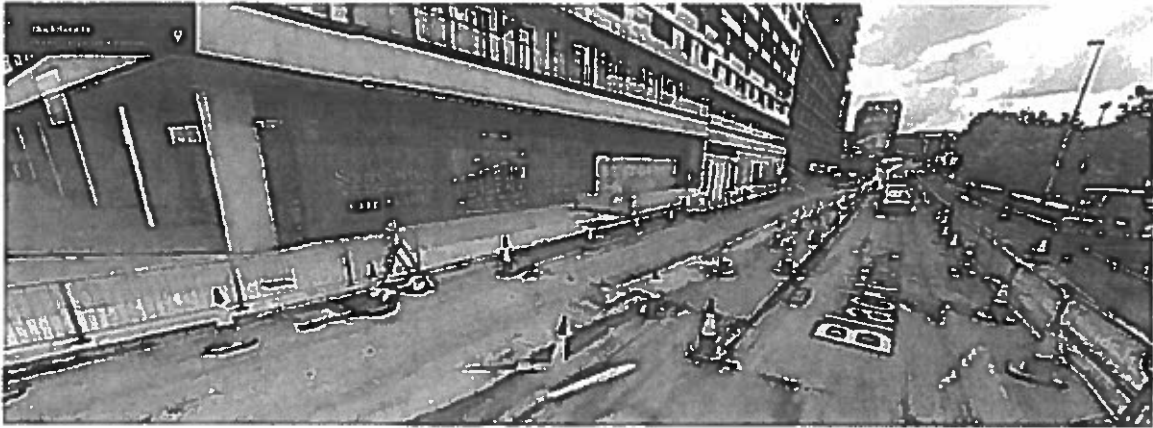
All possible vehicles users will be made aware of the construction site entrance via advance site safety signage. The entrance will be controlled by a banksman at all times during the duration of the project. All vehicles entering the construction zone must enter from the drumartin Link Road side including Birch Avenue & Carmanhall Road. The vehicles will will drive straight into the construction site and will be escorted to the destination within the work zone.

Vehicles leaving the construction site will be aided with two banksman who will guide safely out of construction zone. Stop/Go batters can be used for this part of the project only.

LOCAL BUSINESS

Local business will not be affected by the construction phase of this project. EZ Living Furniture on the corner of Blackthorn Drive will not be affected by the construction phase. The EZ Living Furniture shop windows along the construction side of Blackthorn Drive will remain open to the members of the public for viewing as barriers will be in place to separate the construction site from the viewing zone for the shop. Please see traffic management drawing No. BDF-001 & 002

TRAFFIC MANAGEMENT PLAN BLACKTHORN DRIVE



TRAFFIC MANAGEMENT PLAN BLACKTHORN DRIVE

